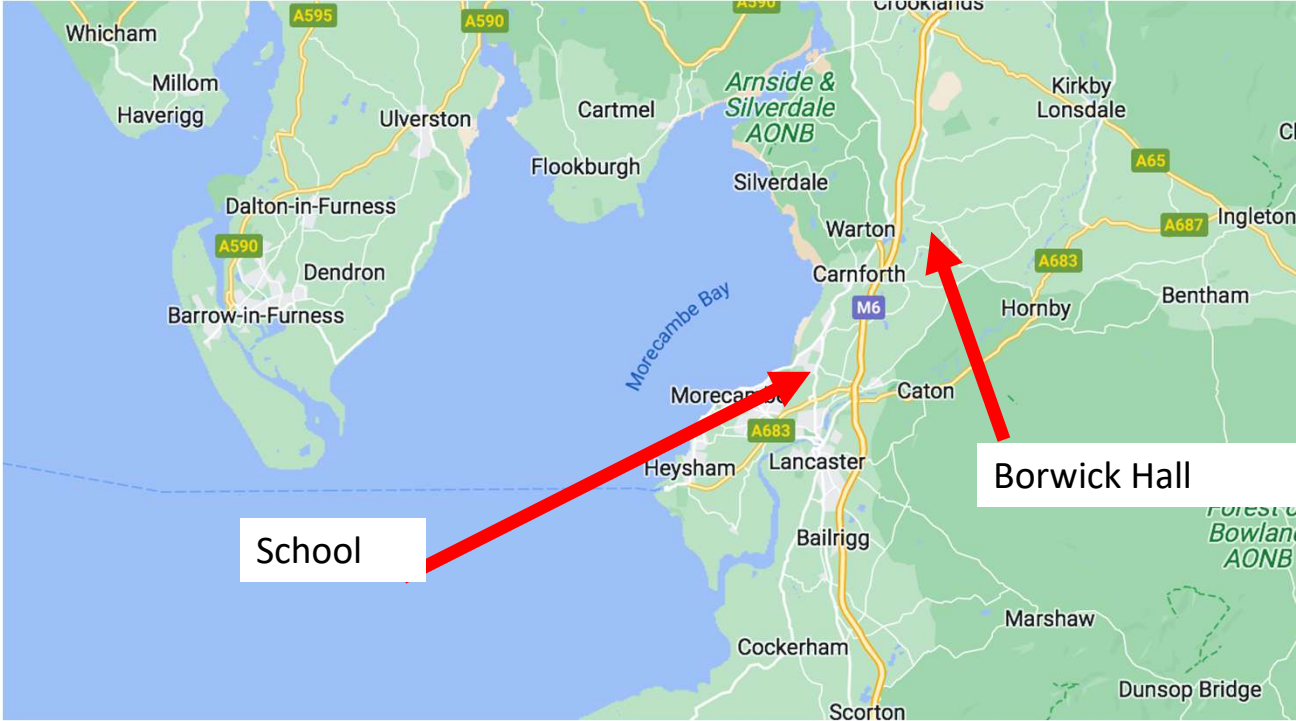
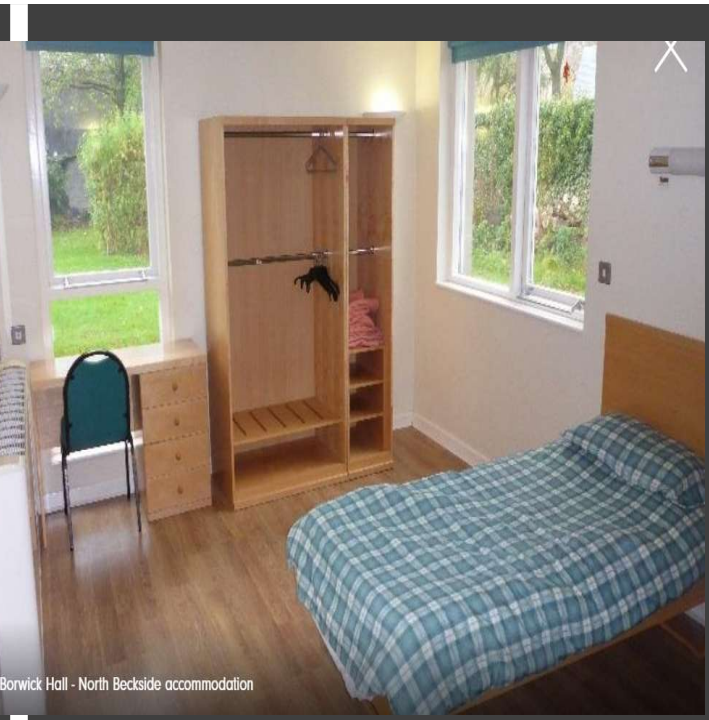
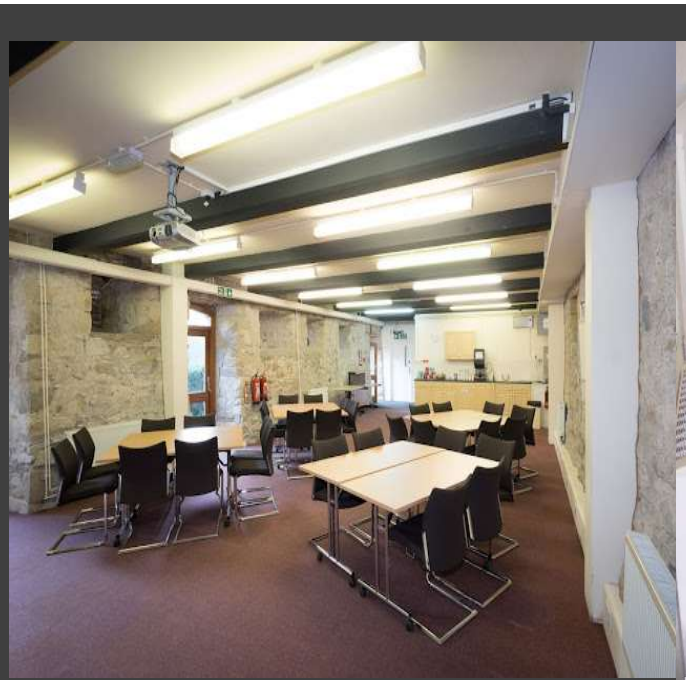


Year 4 Residential 23-24 March 2026





Borwick Hall



Staff

Mrs Winder

Mrs Love

Mrs Chippendale

Mrs Overfield

Mr Bowden - visiting

Timetable

Monday

9:30am Arrive at Borwick – lifts from parents

Settling in and activities

Packed Lunch (disposable packaging)

Outdoor Adventurous activities

Tea

Night-time games

Supper and bed!

Tuesday

8:30am Breakfast

Outdoor Activities

Lunch

Outdoor Activities

4:30pm Collected by parents

Outdoor activities could be any that are provided from canoeing, low ropes, climbing wall, bouldering, tree climb, team challenges amongst others.

Bedrooms

- Bedrooms are a mixture of bunk beds and twin beds, with 2-3 beds in each room.
- Girls and boys will be in separate adjacent blocks.
- We will ask children to choose friends to share a room and will do our very best to accommodate their choices.
- Children will be expected to make their own beds so some practice beforehand would be useful! All bedding is provided.

Kit List

Monday

- wear old, warm, outdoor clothes
- waterproof coat
- walking boots / wellies or old trainers
- A rucksack with hat, gloves, a packed lunch and a drink

To bring in your overnight bag:

- two complete changes of outdoor clothes
- two pairs of shoes – one pair for indoors and a second pair of outdoor shoes (plus the ones they come in)
- pyjamas
- teddy
- personal medication
- towel and wash bag with toiletries, toothpaste and toothbrush
- plastic bags for wet, dirty clothes

You must NOT bring

any electronic equipment:

- phones
- smart watches
- iPads
- cameras etc
- aerosol sprays

The only food and drink you need is a packed lunch for Monday and a water bottle.

All personal medication must be detailed on the medical form and clearly labelled with your child's name and dose instructions. It should be handed to a member of staff on arrival at school on Tuesday morning.

All forms must
be returned
asap.

medical form

photo consent form



Emergency contacts

School

01524 823505

Borwick

(emergency only)

01524 732508
